

# Deletion of LR11 attenuates hypoxia-induced pulmonary arterial smooth muscle cell proliferation with medial thickening in mice

メタデータ	言語: English 出版者: 公開日: 2015-03-20 キーワード (Ja): キーワード (En): 作成者: 蔣, 楽 メールアドレス: 所属:
URL	<a href="https://jair.repo.nii.ac.jp/records/2001683">https://jair.repo.nii.ac.jp/records/2001683</a>

1 **Deletion of LR11 attenuates hypoxia-induced pulmonary arterial smooth muscle**  
2 **cell proliferation with medial thickening in mice**

3

4 Le Jiang MD<sup>1\*</sup>, Hakuoh Konishi MD, PhD<sup>1\*</sup>, Fariz Nurwidya MD, PhD<sup>2</sup>, Kimio Satoh  
5 MD, PhD<sup>3</sup>, Fumiyuki Takahashi, MD, PhD<sup>2</sup>, Hiroyuki Ebinuma<sup>4</sup>, Kengo Fujimura<sup>4</sup>,  
6 Kiyoshi Takasu MD<sup>1</sup>, Meizi Jiang MD, PhD<sup>5</sup>, Hiroaki Shimokawa MD, PhD<sup>3</sup>, Hideaki  
7 Bujo MD, PhD<sup>5</sup>, Hiroyuki Daida MD, PhD<sup>1</sup>

8

9 <sup>1</sup> Department of Cardiovascular Medicine, Juntendo University Graduate School of  
10 Medicine, Tokyo, Japan

11 <sup>2</sup> Department of Respiratory Medicine, Juntendo University Graduate School of  
12 Medicine, Tokyo, Japan

13 <sup>3</sup> Department of Cardiovascular Medicine, Tohoku University Graduate School of  
14 Medicine, Sendai, Japan

15 <sup>4</sup> Tsukuba Research Institute, Sekisui Medical Co. Ltd., Ryugasaki, Japan

16 <sup>5</sup> Department of Clinical-Laboratory and Experimental-Research Medicine, Toho  
17 University Sakura Medical Center, Sakura, Japan

18

19 Running title: LR11 and pulmonary hypertension

20

21

22 \* Le Jiang and Hakuoh Konishi equally contributed to this work.

23

24 Corresponding author: Hakuoh Konishi

25 Department of Cardiovascular Medicine

26 Juntendo University Graduate School of Medicine

27 2-1-1 Hongo, Bunkyo-ku, Tokyo 113-8421, Japan

28 Tel: +81-3-3813-3111; Fax: +81-3-5689-0627

29 E-mail: konishi@juntendo.ac.jp

30

31

32

33

34

1 Key words: pulmonary hypertension, vascular smooth muscle, proliferation, hypoxia,  
2 biomarker

3

4

5 Subject terms

6 Pulmonary Biology

7 Smooth muscle proliferation and differentiation

8

9 Word count 5,067

10 Tables, 2; Figures, 6

11

12 TOC Section – translational

13 Category- vascular Biology

14

### 15 **Objective**

16 We aimed to determine whether LR11 is a potential key regulator of smooth muscle cell  
17 (SMC) proliferation during the progression of hypoxia-induced medial thickening in  
18 mice and whether soluble LR11 (sLR11) can serve as a biomarker in patients with  
19 pulmonary arterial hypertension (PAH).

### 20 **Approach and Results**

21 The role of LR11 in PAH was investigated using mouse and cell models of induced  
22 hypoxia. The expression LR11 and of HIF-1 $\alpha$  was significantly increased in lung tissues  
23 from C57Bl/6 mice after three weeks of exposure to hypoxia compared with normoxia.  
24 Serum sLR11 levels also were increased. Physiological and histochemical analyses  
25 showed that increased right ventricular systolic pressure, right ventricular hypertrophy  
26 and medial thickening induced under hypoxia in wild-type mice were attenuated in  
27 LR11 (-/-) mice. The proliferation rates stimulated by hypoxia or PDGF-BB were  
28 attenuated in SMC derived from LR11 (-/-) mice, compared with those from wild-type  
29 mice. Exogenous sLR11 protein increased the proliferation rates of SMC from wild-type  
30 mice. The expression of LR11 and HIF-1 $\alpha$  was increased in cultured SMC under  
31 hypoxic conditions and HIF-1 $\alpha$  knockdown almost abolished the induction of LR11.  
32 Serum sLR11 levels were significantly higher in patients with, rather than without, PAH.  
33 sLR11 levels positively correlated with pulmonary vascular resistance and mean  
34 pulmonary arterial pressure.

## 1 **Conclusions**

2 LR11 regulated SMC proliferation during the progression of hypoxia-induced medial  
3 thickening in mice. The findings obtained from mice, together with those in humans,  
4 indicate that sLR11 could serve as a novel biomarker that reflects the pathophysiology  
5 of proliferating medial SMC in PAH.

6

7

## 8 **Abbreviations**

9 HIF-1 $\alpha$ : hypoxia-inducible factor-1 alpha

10 LR11: low-density lipoprotein receptor with 11 binding repeats

11 mPAP: mean pulmonary arterial pressure

12 PAH: pulmonary arterial hypertension

13 PASMC: pulmonary arterial smooth muscle cells

14 PVR: pulmonary vascular resistance

15 RVSP: right ventricular systolic pressure

16 Si, small interfering

17 SMC, smooth muscle cells

18 TR, tricuspid regurgitation

19 VSMC: vascular smooth muscle cells

20

21

22

23

24

25

26

27

28

29

30

31

32

33

34

## 1 Introduction

2 Pulmonary arterial hypertension (PAH) is a critical condition with a median survival of  
3 2.8 years if left untreated<sup>1</sup>. Novel drugs with vasodilator action such as endothelin-  
4 1(ET-1) receptor antagonist, phosphodiesterase-5 (PDE5) inhibitors, soluble guanylate  
5 cyclase stimulator and prostacyclin analogues have recently improved symptoms,  
6 exercise capacity and hemodynamics among patients with PAH<sup>2-5</sup>. Although the initial  
7 phases of PAH are clinically silent, the EARLY study showed that mildly symptomatic  
8 PAH when left untreated progressively deteriorates both clinically and  
9 hemodynamically, regardless of exercise capacity<sup>2</sup>. Therefore, the early detection of  
10 initially silent PAH pathophysiology is important to improve treatment outcomes. In this  
11 context, specific biomarkers of the initial progression of the disease are needed, and  
12 BNP/NT-proBNP has served as a sensitive marker in this capacity<sup>6</sup>. Thus, novel  
13 circulating molecules based on a pathophysiology that differs from that of BNP/NT-  
14 proBNP are required to increase the ability to detect initial disease progression and  
15 improve individual treatment strategies. One of candidates for such markers may be a  
16 circulating molecule which represents the proliferation of smooth muscle cells (SMCs)  
17 in the progress of medial thickening. These cells proliferate abnormally under crosstalk  
18 with dysfunctional endothelial cells (ECs) and other components of the pulmonary  
19 vascular wall including myofibroblasts, pericytes and circulating immune cells and thus,  
20 a complicated mechanism underlies the SMC proliferation, one of key features in PAH  
21 pathogenesis<sup>7</sup>. These cells proliferate abnormally under crosstalk with dysfunctional  
22 endothelial cells (ECs) and other components of the pulmonary vascular wall including  
23 myofibroblasts, pericytes and circulating immune cells. Therefore, the mechanism  
24 underlying SMC proliferation is complicated, and a key feature of PAH pathogenesis<sup>7</sup>.  
25 Vascular smooth muscle cells (VSMC) proliferate in the media of the pulmonary artery  
26 of patients with PAH<sup>8</sup> and several growth factors such as platelet-derived growth factor  
27 (PDGF) act as potent mitogens and chemoattractants for VSMC and also cause  
28 vascular remodeling<sup>9</sup>.

29

30 LR11 (also called SorLA or SORL1), is a low-density-lipoprotein (LDL) receptor<sup>10</sup> that is  
31 expressed in intimal smooth muscle cells during the development of atherosclerosis<sup>11-  
32 13</sup>. LR11 released in a soluble form (sLR11) from the intimal SMC membrane by  
33 proteolytic shedding during the phase of rapid SMC proliferation induces SMC  
34 migration<sup>11, 14</sup>. Recent clinical studies have suggested that serum sLR11 could serve as

1 a circulating marker of intimal SMC and reflect cell functions, particularly those of  
2 medial SMC proliferation and migration after phenotype alteration<sup>15</sup>.  
3 The present study investigated the functional significance of sLR11 as a regulator of  
4 SMC in medial thickening, which is the typical pathophysiology of PAH, using animal  
5 models. We then studied the potential of LR11 as a novel biomarker for pathologically  
6 proliferating medial SMCs in patients with PAH.

7

## 8 **Materials and Methods**

9 Materials and methods are available in the online-only Data supplement.

10

## 11 **Results**

### 12 **Hypoxia-induced LR11 expression in murine lungs**

13 We assessed LR11 involvement in hypoxia-induced damage to the pulmonary arteries  
14 of mice. Western blotting showed significantly increased HIF-1 $\alpha$  expression ( $0.33 \pm$   
15  $0.05$  vs.  $0.53 \pm 0.04$   $p < 0.05$ ; Figure 1A and D), LR11 expression ( $0.25 \pm 0.03$  vs.  $0.65$   
16  $\pm 0.04$ ;  $p < 0.05$ ; Figure 1A and B) and serum sLR11 levels (Figure 1C) in mice under  
17 hypoxia, compared with normoxia. These results indicated that hypoxia induced LR11  
18 expression and the release of sLR11 from the lungs, together with hypoxia-induced  
19 intracellular signals via HIF-1 $\alpha$ . Therefore, LR11 might be involved in the development  
20 of PAH in response to hypoxia.

21

### 22 **LR11 (-/-) mice are resistant to induction of pulmonary hypertension**

23 We investigated the role of LR11 in the development of PAH in LR11 (-/-) model mice  
24 that were placed under hypoxia for 21 days to induce experimental PAH<sup>16</sup>. Lung HIF-1 $\alpha$   
25 levels did not significantly differ between wild type (WT) and LR11 (-/-) mice under  
26 hypoxia (Figure 1A and D). The RVSP and ratio of RV/LV+IVS were significantly lower  
27 in LR11 (-/-) than in WT mice. ( $28.3 \pm 2.2$  vs.  $33.3 \pm 2.2$  mmHg,  $p < 0.05$  and  $30.9\% \pm$   
28  $2.2\%$  vs.  $36.4\% \pm 2.4\%$ ,  $p < 0.05$ , respectively; Figure 2A, B and C). These results  
29 indicated that LR11-deficient mice are highly resistant to developing PAH induced by

1 hypoxia.

2

### 3 **Index of medial wall thickness is reduced in LR11 (-/-) mice**

4 Histological findings showed that the index of medial wall thickness in small pulmonary  
5 arteries was significantly lower in LR11 (-/-) than in WT mice ( $3.6\% \pm 0.5\%$  vs.  $5.7\% \pm$   
6  $0.4\%$ ,  $p < 0.05$ ; Figure 3A and B). The ratios of arteries categorized as muscular, partly  
7 muscular and non-muscular did not differ between LR11 (-/-) and wild-type mice under  
8 normoxia. However, the ratios of partly muscular and muscular arteries in LR11 (-/-)  
9 mice were significantly decreased, whereas the ratios of non-muscular arteries in LR11  
10 (-/-) mice were significantly increased compared with those in WT mice under hypoxia  
11 ( $n = 4$ ,  $*P < 0.05$ ; C). The results of an immunohistochemical comparison using anti-  
12 CD45 antibody, which is a common antigen for leukocytes, revealed significantly fewer  
13 CD45-positive cells in LR11 (-/-), than in WT mice. These findings suggested that  
14 decreased inflammatory cell infiltration in addition to decreased PASMC proliferation, is  
15 involved in the decreased medial thickening in the absence of LR11. All these findings  
16 indicated that LR11-deficient mice are highly resistant to the development of medial  
17 thickening induced by hypoxia (Figure 3C).

18

### 19 **LR11 is a potential key regulator of SMC proliferation under hypoxia**

20 Because sLR11 has been shown to be a phenotype regulator of contractile SMC to  
21 synthetic SMC, and highly associated with intimal thickening after the injury of femoral  
22 arteries in mice<sup>17</sup>, we assessed the proliferation of PASMC to determine the  
23 pathological role of sLR11 in the development of PAH in model mice. Proliferation rates  
24 under hypoxia (1% O<sub>2</sub> and 5% CO<sub>2</sub>) for 48 hours and in the presence of PDGF-BB (20  
25 ng/mL) were significantly decreased in PASMC isolated from LR11 (-/-), compared with  
26 those from wild-type mice ( $0.18 \pm 0.02$  vs.  $0.45 \pm 0.05$  nm,  $P < 0.05$  and  $0.16 \pm 0.01$  vs.  
27  $0.45 \pm 0.07$  nm,  $P < 0.05$ , respectively; Figure 4). In contrast, the proliferation rates of  
28 PASMC from wild-type mice were significantly increased in the presence, compared  
29 with the absence of 10 ng/mL of sLR11 ( $0.19 \pm 0.01$  vs.  $0.42 \pm 0.02$  nm,  $P < 0.05$ ).  
30 These results suggested that decreased PASMC proliferation contributes at least in  
31 part to the mechanism underlying the increased resistance of LR11 (-/-) mice to  
32 hypoxia-induced PAH.

33

### 34 **Hypoxia-induced LR11 expression in cultured human pulmonary arterial smooth**

## 1 **muscle cells is dependent on HIF-1 $\alpha$ pathway**

2 The above findings of LR11 (-/-) and WT mice suggested that LR11, a regulator of SMC  
3 proliferation and migration that causes vascular intimal thickening after injury<sup>17</sup>, is  
4 involved in the progression of PAH as an effector gene under HIF1 $\alpha$ -mediated  
5 intracellular signals. We therefore assessed LR11 and HIF-1 $\alpha$  expression in PASMC  
6 after incubation for 24, 48, 72 and 96 hours under hypoxic conditions (1% O<sub>2</sub> and 5%  
7 CO<sub>2</sub>). The expression of LR11 peaked at 48 hours under hypoxia compared with  
8 normoxia (0.84  $\pm$  0.02 vs. 0.31  $\pm$  0.03,  $p < 0.05$ ; Figure 5A and B). The transient  
9 increase in LR11 at this time point was similar to that of HIF-1 $\alpha$  (0.92  $\pm$  0.05 vs. 0.41  $\pm$   
10 0.04,  $p < 0.05$ ; Figure 5A and B). Thus, we analyzed the effect of HIF1 $\alpha$ -knockdown on  
11 LR11 expression after hypoxia. The sharp increase in LR11 expression at 48 h was  
12 almost completely abrogated in HIF1 $\alpha$ -knockdown PASMC under hypoxia (Figure 5C  
13 and D). These results indicated that LR11 expression is induced via HIF-1 $\alpha$  signaling  
14 after hypoxia, and that it might cause increased PASMC migration and proliferation.

15

## 16 **Serum sLR11 levels are increased in patients with PAH**

17 We investigated whether sLR11 could serve as a marker of PAH in patients because  
18 the findings *in vitro* and *in vivo* indicated that LR11 is important for PAH progression in  
19 mice. We prospectively enrolled 20 consecutive patients with suspected pulmonary  
20 hypertension (Figure6) and then compared serum sLR11 levels in patients with and  
21 without confirmed PAH whose age, sex and World Health Organization (WHO)  
22 functional class did not significantly differ (Table 1). Most patients had WHO functional  
23 class II PAH. Connective tissue diseases were associated with PAH in nine of 11  
24 patients and two had portopulmonary hypertension (PoPH). All of the patients without  
25 PAH had connective tissue diseases. Levels of sLR11 were significantly higher in  
26 patients with, rather than without, PAH (14.2  $\pm$  4.5 vs. 9.2  $\pm$  4.1 ng/mL;  $P = 0.019$ ),  
27 whereas levels of BNP and UA did not significantly differ (Table 1). Pearson's  
28 correlation coefficient analyses showed that the sLR11 levels positively correlated with  
29 mPAP ( $r = 0.633$ ,  $P = 0.003$ ) and PVR ( $r = 0.580$ ,  $P = 0.007$ ) among all variables (Table  
30 2). Thus, increased sLR11 levels in patients may reflect the pathological status of SMC  
31 in PAH.

32

33

## 34 **Discussion**



1 The major finding of this study is that LR11 regulated medial thickening during the  
2 process of vascular remodeling in mice with PH. A deletion of LR11 did not result in  
3 pulmonary hypertension and LR11 expression increased dependently on HIF-1 $\alpha$  under  
4 hypoxia. Serum sLR11 levels were also higher in patients with, than without PAH and  
5 such increases were associated with mPAP or PVR. This finding indicates that sLR11  
6 serves as a marker of PASMC proliferation in patients with PAH.

### 7 8 ***LR11 deletion prevents pulmonary vascular remodeling via HIF-1 $\alpha$ -mediated*** 9 ***signals***

10 We investigated whether hypoxia induces HIF-1 $\alpha$ -dependent LR11 expression *in vivo*  
11 and *in vitro* to determine the mechanisms of vascular remodeling in PH. We found that  
12 deleting LR11 prevented the development of pulmonary hypertension in a mouse  
13 model of PH. We previously reported that deleting LR11 in mice with atherosclerosis  
14 prevents vascular remodeling such as VSMC proliferation and migration<sup>17</sup>. The present  
15 findings showed that an LR11 deletion suppressed vascular thickening induced by  
16 hypoxia and that serum sLR11 levels were increased under hypoxia in wild-type mouse  
17 models of PH. We also investigated the role of LR11 in the proliferation of PASMC  
18 using LR11-deficient PASMC. The proliferation of PASMC from LR11 (-/-) mice under  
19 hypoxia was reduced, whereas that from wild-type mice was increased by exogenous  
20 sLR11 protein, suggesting that LR11 deletion regulates SMC proliferation. HIF-1 $\alpha$  plays  
21 a critical role in the pathological status of PH in these models of hypoxia<sup>18</sup>. We  
22 previously reported that HIF-1 $\alpha$  binds to the proximal 144-bp LR11 promoter in a region  
23 where a potential HIF-1-binding site can be induced by hypoxia<sup>19</sup>. The present study  
24 found that HIF-1 $\alpha$  knockdown decreased LR11 expression under hypoxia, indicating  
25 that HIF-1 $\alpha$  plays a key role in LR11 expression under such conditions.

### 26 27 ***Soluble LR11 as a biomarker of proliferative SMC in patients with PAH***

28 The early phases of PAH are considered to be histologically nonspecific, with medial  
29 pulmonary arterial and adventitial thickening and the appearance of muscle in the walls  
30 of normally non-muscular arteries being the only abnormalities<sup>20</sup>. Many current  
31 screening modalities depend on detecting an increase in PAP, and thus the early  
32 stages of pulmonary vascular disease are likely to be overlooked<sup>21</sup>. One mechanism of  
33 vascular remodeling is VSMC proliferation<sup>20</sup>. We previously reported that sLR11 is a  
34 biomarker of VSMC proliferation in atherosclerosis<sup>11, 13, 15</sup>. That prospective study of a

1 small cohort of naïve patients uncovered a relationship between sLR11 and mPAP or  
2 PVR. Levels of sLR11 were significantly increased in patients with, rather than without  
3 PAH. Serum sLR11 levels were  $7.8 \pm 1.6$  ng/mL in 56 healthy volunteers (data not  
4 shown). These levels significantly differed between healthy volunteers and patients  
5 with PAH but not between healthy volunteers and patients without PAH. Therefore,  
6 sLR11 might serve as a biomarker indicating SMC proliferation in the process of  
7 pulmonary arterial remodeling. Although several serological markers of PAH have been  
8 investigated, only BNP and NT-proBNP have been included as prognostic parameters  
9 in treatment guidelines to date<sup>6</sup>. The proteins BNP/NT-proBNP are associated with  
10 pulmonary hemodynamics and right ventricular dysfunction in PH, and BNP levels  
11 within WHO functional class (FC) II do not increase<sup>22-24</sup>. We previously reported that  
12 sLR11 is produced by immature, but not by mature SMC, in atherosclerotic arteries and  
13 that LR11 mRNA expression is high in human CD34<sup>+</sup> CD38<sup>-</sup> immature hematopoietic  
14 progenitors<sup>17, 19, 25</sup>. Considering the difficulties involved in trying to identify the major  
15 source of cells that regulate circulating sLR11 levels, we analyzed LR11 expression in  
16 rat monocrotaline and mouse hypoxia models. Levels of LR11 protein increased in both  
17 models indicating that LR11 expression increased in the present models of PAH under  
18 hypoxia, and under treatment with monocrotaline (data not shown). The findings  
19 suggested that LR11 expression is increased in association with the SMC proliferation  
20 during the progress of PAH, and not only under hypoxia. Although we found that sLR11  
21 alone induced the proliferation of cultured PASMC, endothelial cells and immature cells  
22 such as HSPC might also regulate serum sLR11 levels in pulmonary hypertension<sup>19, 26</sup>.  
23 We previously showed that sLR11 could be a useful biomarker of conditions such as  
24 atherosclerosis<sup>17</sup>, large B-cell lymphoma<sup>27</sup>, non-Hodgkin's lymphoma<sup>28</sup>, follicular  
25 lymphoma<sup>29</sup>, diabetic retinopathy<sup>30</sup> and acute coronary syndrome<sup>31</sup>. Overall, sLR11  
26 might serve as a potentially noninvasive and objective parameter of responses to  
27 therapy, although further investigation using other models of PH is essential to define  
28 how much circulating sLR11 levels reflect the pathological conditions of PASMC in  
29 patients.

30 We recently found that plasma cyclophilin A (CyPA) could serve as a marker of VSMC  
31 proliferation in PH and that plasma CyPA levels increase in patients with PH according  
32 to the severity of pulmonary vascular resistance<sup>32</sup>. The PAH in the present study was  
33 mainly within WHO FC II, and therefore, we believe that sLR11 will be useful to detect  
34 PAH. Further investigation is needed to confirm whether sLR11 can serve as a

1 biomarker of the effects of drugs on PAH.  
2 The present study found that sLR11 induced the proliferation of PASMC, which could  
3 be a therapeutic target of pulmonary hypertension. In this context, the effects of statins  
4 on sLR11-mediated PASMC proliferation should be determined, because statins might  
5 be effective against PAH<sup>33</sup>, and inhibit the LR11-induced migration of intimal SMC<sup>34</sup>.  
6 In conclusion, this is the first description of sLR11 serving as a biomarker of VSMC  
7 proliferation in PH. A deletion of LR11 prevents the development of pulmonary  
8 hypertension, indicating that LR11 is an important factor in the progression of this  
9 disease.

1 **Acknowledgements**

2 We are grateful to Dr. J. Takagi (Laboratory of Protein Synthesis and Expression,  
3 Institute for Protein Research, Osaka University) for providing recombinant LR11  
4 Vps10 domain protein.

5

6 **Sources of funding**

7 This study was supported by JSPS KAKENHI Grant Number 24591069, 15K09127.

8

9 **Disclosures**

10 None to declare.

11

## 1 References

- 2 1. D'Alonzo GE, Barst RJ, Ayres SM, Bergofsky EH, Brundage BH, Detre KM,  
3 Fishman AP, Goldring RM, Groves BM, Kernis JT. Survival in patients with  
4 primary pulmonary hypertension. Results from a national prospective registry.  
5 *Ann Intern Med.* 1991; 115:343-349
- 6 2. Galiè N, Rubin L, Hoeper M, Jansa P, Al-Hiti H, Meyer G, Chiossi E, Kusic-Pajic  
7 A, Simonneau G. Treatment of patients with mildly symptomatic pulmonary  
8 arterial hypertension with bosentan (EARLY study): A double-blind, randomised  
9 controlled trial. *Lancet.* 2008; 371:2093-2100
- 10 3. Rubin LJ, Badesch DB, Fleming TR, Galiè N, Simonneau G, Ghofrani HA,  
11 Oakes M, Layton G, Serdarevic-Pehar M, McLaughlin VV, Barst RJ, Group S-S.  
12 Long-term treatment with sildenafil citrate in pulmonary arterial hypertension:  
13 The SUPER-2 study. *Chest.* 2011; 140:1274-1283
- 14 4. Rubin LJ, Galiè N, Grimminger F, Grünig E, Humbert M, Jing ZC, Keogh A,  
15 Langleben D, Fritsch A, Menezes F, Davie N, Ghofrani HA. Riociguat for the  
16 treatment of pulmonary arterial hypertension: A long-term extension study  
17 (PATENT-2). *Eur Respir J.* 2015;45:1303-13.
- 18 5. Pulido T, Adzerikho I, Channick RN, et al. Macitentan and morbidity and  
19 mortality in pulmonary arterial hypertension. *N Engl J Med.* 2013;369:809-818
- 20 6. Galiè N, Hoeper MM, Humbert M, et al. Guidelines for the diagnosis and  
21 treatment of pulmonary hypertension: The task force for the diagnosis and  
22 treatment of pulmonary hypertension of the european society of cardiology  
23 (ESC) and the european respiratory society (ERS), endorsed by the  
24 international society of heart and lung transplantation (ISHLT). *Eur Heart J.*  
25 2009;30:2493-2537

- 1 7. Guignabert C, Tu L, Girerd B, Ricard N, Huertas A, Montani D, Humbert M. New  
2 molecular targets of pulmonary vascular remodeling in pulmonary arterial  
3 hypertension: Importance of endothelial communication. *Chest*. 2015;147:529-  
4 537
- 5 8. Heath D, Smith P, Gosney J, Mulcahy D, Fox K, Yacoub M, Harris P. The  
6 pathology of the early and late stages of primary pulmonary hypertension. *Br*  
7 *Heart J*. 1987;58:204-213
- 8 9. Hassoun PM, Mouthon L, Barberà JA, et al. Inflammation, growth factors, and  
9 pulmonary vascular remodeling. *J Am Coll Cardiol*. 2009;54:S10-19
- 10 10. Yamazaki H, Bujo H, Kusunoki J, Seimiya K, Kanaki T, Morisaki N, Schneider  
11 WJ, Saito Y. Elements of neural adhesion molecules and a yeast vacuolar  
12 protein sorting receptor are present in a novel mammalian low density  
13 lipoprotein receptor family member. *J Biol Chem*. 1996;271:24761-24768
- 14 11. Kanaki T, Bujo H, Hirayama S, Ishii I, Morisaki N, Schneider WJ, Saito Y.  
15 Expression of LR11, a mosaic LDL receptor family member, is markedly  
16 increased in atherosclerotic lesions. *Arterioscler Thromb Vasc Biol*.  
17 1999;19:2687-2695
- 18 12. Zhu Y, Bujo H, Yamazaki H, Hirayama S, Kanaki T, Takahashi K, Shibasaki M,  
19 Schneider WJ, Saito Y. Enhanced expression of the LDL receptor family  
20 member LR11 increases migration of smooth muscle cells in vitro. *Circulation*.  
21 2002;105:1830-1836
- 22 13. Ohwaki K, Bujo H, Jiang M, Yamazaki H, Schneider WJ, Saito Y. A secreted  
23 soluble form of LR11, specifically expressed in intimal smooth muscle cells,  
24 accelerates formation of lipid-laden macrophages. *Arterioscler Thromb Vasc*  
25 *Biol*. 2007;27:1050-1056

- 1 14. Zhu Y, Bujo H, Yamazaki H, Ohwaki K, Jiang M, Hirayama S, Kanaki T,  
2 Shibasaki M, Takahashi K, Schneider WJ, Saito Y. LR11, an LDL receptor gene  
3 family member, is a novel regulator of smooth muscle cell migration. *Circ Res.*  
4 2004;94:752-758
- 5 15. Ogita M, Miyauchi K, Jiang M, Kasai T, Tsuboi S, Naito R, Konishi H, Dohi T,  
6 Yokoyama T, Okazaki S, Shimada K, Bujo H, Daida H. Circulating soluble LR11,  
7 a novel marker of smooth muscle cell proliferation, is enhanced after coronary  
8 stenting in response to vascular injury. *Atherosclerosis.* 2014; 237:374-378
- 9 16. Frank DB, Abtahi A, Yamaguchi DJ, Manning S, Shyr Y, Pozzi A, Baldwin HS,  
10 Johnson JE, de Caestecker MP. Bone morphogenetic protein 4 promotes  
11 pulmonary vascular remodeling in hypoxic pulmonary hypertension. *Circ Res.*  
12 2005; 97:496-504
- 13 17. Jiang M, Bujo H, Ohwaki K, Unoki H, Yamazaki H, Kanaki T, Shibasaki M,  
14 Azuma K, Harigaya K, Schneider WJ, Saito Y. AngII-stimulated migration of  
15 vascular smooth muscle cells is dependent on LR11 in mice. *J Clin Invest.*  
16 2008; 118:2733-2746
- 17 18. Yu AY, Shimoda LA, Iyer NV, Huso DL, Sun X, McWilliams R, Beaty T, Sham  
18 JS, Wiener CM, Sylvester JT, Semenza GL. Impaired physiological responses  
19 to chronic hypoxia in mice partially deficient for hypoxia-inducible factor 1alpha.  
20 *J Clin Invest.* 1999;103:691-696
- 21 19. Nishii K, Nakaseko C, Jiang M, Shimizu N, Takeuchi M, Schneider WJ, Bujo H.  
22 The soluble form of LR11 protein is a regulator of hypoxia-induced, urokinase-  
23 type plasminogen activator receptor (uPAR)-mediated adhesion of immature  
24 hematological cells. *J Biol Chem.* 2013;288:11877-11886
- 25 20. Tudor RM, Marecki JC, Richter A, Fijalkowska I, Flores S. Pathology of

- 1 pulmonary hypertension. *Clin Chest Med.* 2007;28:23-42, vii
- 2 21. Lau EM, Manes A, Celermajer DS, Galiè N. Early detection of pulmonary  
3 vascular disease in pulmonary arterial hypertension: Time to move forward. *Eur*  
4 *Heart J.* 2011;32:2489-2498
- 5 22. Nagaya N, Nishikimi T, Okano Y, Uematsu M, Satoh T, Kyotani S, Kuribayashi  
6 S, Hamada S, Kakishita M, Nakanishi N, Takamiya M, Kunieda T, Matsuo H,  
7 Kangawa K. Plasma brain natriuretic peptide levels increase in proportion to the  
8 extent of right ventricular dysfunction in pulmonary hypertension. *J Am Coll*  
9 *Cardiol.* 1998;31:202-208
- 10 23. Leuchte HH, Holzapfel M, Baumgartner RA, Ding I, Neurohr C, Vogeser M,  
11 Kolbe T, Schwaiblmair M, Behr J. Clinical significance of brain natriuretic  
12 peptide in primary pulmonary hypertension. *J Am Coll Cardiol.* 2004;43:764-770
- 13 24. Cracowski JL, Yaici A, Sitbon O, et al. [Biomarkers as prognostic factors in  
14 pulmonary arterial hypertension. Rationale and study design]. *Rev Mal Respir.*  
15 2004;21:1137-1143
- 16 25. Zhang X, Dormady SP, Basch RS. Identification of four human cDNAs that are  
17 differentially expressed by early hematopoietic progenitors. *Exp Hematol.*  
18 2000;28:1286-1296
- 19 26. Ting HJ, Stice JP, Schaff UY, Hui DY, Rutledge JC, Knowlton AA, Passerini AG,  
20 Simon SI. Triglyceride-rich lipoproteins prime aortic endothelium for an  
21 enhanced inflammatory response to tumor necrosis factor-alpha. *Circ Res.*  
22 2007;100:381-390
- 23 27. Kawaguchi T, Ohwada C, Takeuchi M, et al. Potential utility of serum soluble  
24 LR11 as a diagnostic biomarker for intravascular large B-cell lymphoma. *Leuk*  
25 *Lymphoma.* 2014; 55:2391-2394



- 1 28. Fujimura K, Ebinuma H, Fukamachi I, Ohwada C, Kawaguchi T, Shimizu N,  
2 Takeuchi M, Sakaida E, Jiang M, Nakaseko C, Bujo H. Circulating LR11 is a  
3 novel soluble-receptor marker for early-stage clinical conditions in patients with  
4 non-Hodgkin's lymphoma. *Clin Chim Acta*. 2014; 430:48-54
- 5 29. Kawaguchi T, Ohwada C, Takeuchi M, Shimizu N, Sakaida E, Takeda Y, Sakai  
6 S, Tsukamoto S, Yamazaki A, Sugita Y, Jiang M, Higashi M, Yokote K, Tamaru  
7 J, Bujo H, Nakaseko C. LR11: A novel biomarker identified in follicular  
8 lymphoma. *Br J Haematol*. 2013;163:277-280
- 9 30. Takahashi M, Bujo H, Shiba T, Jiang M, Maeno T, Shirai K. Enhanced circulating  
10 soluble LR11 in patients with diabetic retinopathy. *Am J Ophthalmol*.  
11 2012;154:187-192
- 12 31. Ogita M, Miyauchi K, Dohi T, Tsuboi S, Miyazaki T, Yokoyama T, Yokoyama K,  
13 Shimada K, Kurata T, Jiang M, Bujo H, Daida H. Increased circulating soluble  
14 LR11 in patients with acute coronary syndrome. *Clin Chim Acta*. 2013;415:191-  
15 194
- 16 32. Satoh K, Satoh T, Kikuchi N, et al. Basigin mediates pulmonary hypertension  
17 by promoting inflammation and vascular smooth muscle cell proliferation. *Circ*  
18 *Res*. 2014;115:738-750
- 19 33. Katsiki N, Wierzbicki AS, Mikhailidis DP. Pulmonary arterial hypertension and  
20 statins: An update. *Curr Opin Cardiol*. 2011;26:322-326
- 21 34. Bujo H, Saito Y. Modulation of smooth muscle cell migration by members of the  
22 low-density lipoprotein receptor family. *Arterioscler Thromb Vasc Biol*.  
23 2006;26:1246-1252  
24  
25

1

**2 Highlights**

3 ● Deleting LR11 did not result in pulmonary hypertension and LR11 expression  
4 increased dependently upon HIF-1 $\alpha$  under hypoxia.

5

6 ● LR11 is a potential key regulator of SMC proliferation under hypoxia.

7

8 ● Serum sLR11 levels in patients with PAH are increased and serum sLR11 was  
9 associated with mPAP or PVR. Soluble LR11 might serve as a biomarker of  
10 pulmonary arterial remodeling.

11

1 Table 1. Comparison between patients with and without PAH.

	PH ( - ) n=9	PH ( + ) n=11	P
Age (years)	67.1 ± 9.9 (n = 9)	54.0 ± 20.8 (n = 11)	0.084
Number of females (%)	8 ( 88.9% )	9 ( 81.8% )	1.000
WHO FC ( I/II/III/IV )	0/9/0/0	0/10/1/0	1.000
6MWD (m)	376.3 ± 95.9 (n = 3)	328.6 ± 135.6 (n = 8)	0.595
LR11 (ng/mL)	9.2 ± 4.1 (n = 9)	14.2 ± 4.5 (n = 11)	0.019
BNP (pg/mL)	169.9 ± 187.4 (n = 9)	84.3 ± 102.8 (n = 11)	0.210
UA (mg/dL)	5.2 ± 1.6 (n = 9)	5.7 ± 0.9 (n = 11)	0.347
mRAP (mmHg)	4.8 ± 3.1 (n = 9)	5.1 ± 3.2 (n = 10)	0.825
mPAP (mmHg)	14.0 ± 2.1 (n = 9)	32.0 ± 7.4 (n = 11)	< 0.001
PVR (dyne·sec·cm <sup>-5</sup> )	148.8 ± 53.4 (n = 9)	427.6 ± 203.1 (n = 11)	< 0.001
CI (L/min/m <sup>2</sup> )	2.8 ± 0.7 (n = 9)	2.9 ± 0.6 (n = 11)	0.658

2

3

4 Abbreviations: 6MWD, 6-minute walking distance; BNP, brain natriuretic peptide; CI,  
5 cardiac index; LR11, low-density lipoprotein receptor with 11 binding repeats; mPAP,  
6 mean pulmonary arterial pressure; mRAP, mean right atrial pressure; PVR, pulmonary  
7 vascular resistance; UA, uric acid; WHO FC, World Health Organization functional  
8 class.

9

10

1 Table 2. Pearson's correlation coefficient between sLR11 levels and variables.

n = 20	n	Pearson's correlation coefficient	P
Age (years)	20	-0.029	0.902
Women (n)	20	0.075	0.754
WHO FC (I/II/III/IV)	20	0.317	0.173
BNP (pg/mL)	20	0.017	0.945
UA (mg/dL)	20	0.054	0.821
mRAP (mmHg)	19	0.137	0.575
mPAP (mmHg)	20	0.633	0.003
PVR (dyne · sec · cm <sup>-5</sup> )	20	0.580	0.007
CI (L/min/m <sup>2</sup> )	20	-0.093	0.697

2

3

4 Abbreviations: BNP, brain natriuretic peptide; CI, cardiac index; LR11, low-density  
5 lipoprotein receptor with 11 binding repeats; mPAP, mean pulmonary arterial pressure;  
6 mRAP, mean right atrial pressure; PVR, pulmonary vascular resistance; UA, uric acid,  
7 WHO FC, World Health Organization functional class.

8

1 **Figure 1. Western blots of LR11 and HIF-1 $\alpha$  protein expression in lungs of mice**  
2 **exposed to normoxia or hypoxia.**

3  
4 A and B. LR11 protein expression significantly increased in lungs of WT mice exposed  
5 to hypoxia compared with normoxia.

6 A and D. Expression of HIF-1 $\alpha$  protein significantly increased in wild type (WT) mice  
7 under hypoxia compared with normoxia ( $0.25 \pm 0.03$  vs.  $0.65 \pm 0.04$ ; \* $p < 0.05$ ). Lung  
8 HIF-1 $\alpha$  levels did not significantly differ between WT and LR11 (-/-) mice under hypoxia.

9 C. Levels of sLR11 increased in WT mice after three weeks of hypoxia compared with  
10 those under normoxia ( $4.6 \pm 0.7$  vs.  $6.5 \pm 1.0$  ng/mL; \* $P < 0.05$ ). Data in bar graphs are  
11 expressed as means  $\pm$  SD (n = 5). Statistical significance was determined with  
12 unpaired Student's t-test.

13  
14 **Figure 2. Effects of LR11 deletion on hypoxia-induced pulmonary hypertension**  
15 **and of chronic hypoxia on right ventricular systolic pressure and right**  
16 **ventricular hypertrophy**

17  
18 A. Representative traces of right ventricular systolic pressure (RVSP) of wild type (WT)  
19 and LR11 (-/-) mice exposed to normoxia and hypoxia for three weeks.

20 B. Pulmonary hypertension did not develop in LR11 (-/-) mice compared with WT mice.  
21 ( $28.3 \pm 2.2$  vs.  $33.3 \pm 2.2$  mmHg, \* $P < 0.05$ ).

22 C. Ratios of right to left ventricular weight plus septal weight RV/ (LV+S) of WT and  
23 LR11 (-/-) mice exposed to normoxia and hypoxia for 3 weeks. Values for RV/LV+S in  
24 LR11 (-/-) mice are significantly decreased compared with those in WT mice. ( $30.9 \pm$   
25  $2.2\%$  vs.  $36.4. \pm 2.4\%$ , \* $P < 0.05$ ; n = 8 mice per group). Data in bar graphs are  
26 expressed as means  $\pm$  SD (n = 8)

27 Statistical significance was determined with Tukey honestly significant difference.

28  
29 **Figure 3. LR11 deletion ameliorates vascular remodeling under hypoxic**  
30 **conditions.**

31  
32 A. Ratio (%) of wall thickness of small pulmonary arteries exposed to chronic hypoxia.  
33 Representative photomicrographs of vascular remodeling in distal arterioles of lungs  
34 exposed to hypoxia for 3 weeks. Lung sections were stained with hematoxylin eosin

1 and Elastic van Gieson. Magnification,  $\times 40$ ; scale bar, 25  $\mu\text{m}$ .  
 2 B. Medial wall thickness index (%WT) in distal arterioles (diameter, 50 - 100  $\mu\text{m}$ ) of  
 3 lungs from LR11 (-/-) and wild type (WT) mice significantly differed after exposure to  
 4 hypoxia for 3 weeks ( $3.6\% \pm 0.5\%$  vs.  $5.7\% \pm 0.4\%$ ;  $P < 0.05$ ). Bar graphs show data  
 5 expressed as means  $\pm$  SD ( $n = 8$ ).  $*P < 0.05$ .  
 6 C. Ratios of three arteries categorized as muscular, partly muscular and non-muscular,  
 7 did not differ between LR11 (-/-) and WT mice under normoxia. Ratios of partly  
 8 muscular and muscular arteries in LR11 (-/-) mice were significantly decreased and  
 9 those of non-muscular arteries were significantly increased in LR11 (-/-) compared with  
 10 WT mice under hypoxia ( $n = 4$  each,  $*P < 0.05$ ).  
 11 D. Number of CD45-positive cells in distal pulmonary artery adventitia was significantly  
 12 reduced in LR11-/- compared with WT mice after exposure to hypoxia. Number of  
 13 CD45-positive cells did not differ between LR11-/- and WT mice under normoxia ( $n = 4$   
 14 each,  $*P < 0.05$ . Data in bar graphs are expressed as means  $\pm$  SD.)  
 15 Statistical significance was determined with Tukey honestly significant difference.  
 16 EVG, Elastica van Gieson; HE, hematoxylin eosin.

17

#### 18 **Figure 4. Role of LR11 in pulmonary smooth muscle cell proliferation.**

19

20 Comparison of proliferation of pulmonary SMC from LR11 (-/-) and wild type (WT) mice.  
 21 Exogenous sLR11 (10 ng/mL) induced proliferation in WT ( $0.19 \pm 0.01$  vs.  $0.42 \pm 0.02$   
 22 nm,  $P < 0.05$ ). Rate of proliferation is reduced in SMCs from LR11 (-/-), compared with  
 23 those from WT mice incubated with exogenous PDGF-BB (20 ng/mL) ( $0.16 \pm 0.01$  vs.  
 24  $0.45 \pm 0.07$  nm,  $P < 0.05$ ) or under hypoxia (1%  $\text{O}_2$  and 5%  $\text{CO}_2$ ) for 48 hours ( $0.18 \pm$   
 25  $0.02$  vs.  $0.45 \pm 0.05$  nm,  $P < 0.05$ );  $n = 4$  each;  $*P < 0.05$ .  
 26 Statistical significance was determined with Tukey honestly significant difference.

27

#### 28 **Figure 5. Expression of LR11 and HIF-1 $\alpha$ in human arterial SMC under hypoxia.**

29

30 A. Levels of LR11 and HIF-1 $\alpha$  protein analyzed by Western blotting after 24, 48, 72 and  
 31 96 hours under hypoxic conditions (1%  $\text{O}_2$  and 5%  $\text{CO}_2$ ).  
 32 B. Levels of LR11 and HIF-1 $\alpha$  protein expression peaked at 48 hours under hypoxia  
 33 compared with normoxia ( $0.9 \pm 0.02$  vs.  $0.31 \pm 0.03$ ,  $*P < 0.05$  and  $1.17 \pm 0.04$  vs.  
 34  $0.42 \pm 0.07$ ,  $*P < 0.05$ , respectively). Statistical significance was determined with

1 unpaired Student's t-test.

2 C. HIF-1 $\alpha$  expression in human PASMC was knocked down using small interfering  
3 RNA (siRNA) and then LR11 and HIF-1 $\alpha$  protein expression was compared in cells  
4 incubated with two specific siRNA and one non-specific control.

5 D. Levels of LR11 and HIF-1 $\alpha$  protein expression decreased compared with non-  
6 specific controls ( $0.54 \pm 0.05$  vs.  $0.02 \pm 0.01$ ,  $0.02 \pm 0.01$ , \*P < 0.05 and  $0.61 \pm 0.05$  vs.  
7  $0.04 \pm 0.01$ ,  $0.05 \pm 0.01$ , \*P < 0.05, respectively). Statistical significance was  
8 determined with Tukey honestly significant difference.

9

10 **Figure 6. Flow of 20 consecutive prospectively enrolled patients suspected**  
11 **pulmonary hypertension through the study.**

12

13 Inclusion criteria for suspected PAH comprised echocardiographic and TR velocity  $\geq$   
14 3.0 or 2.5 m/s with symptoms such as dyspnea. Eleven patients were diagnosed with  
15 PAH defined as mean PAP  $\geq$  25 mmHg and PCWP  $\leq$  15 mmHg.

16 PAH, pulmonary arterial hypertension; PAP, pulmonary arterial pressure; PCWP,  
17 pulmonary capillary wedge pressure; TR, tricuspid regurgitation.

## **Materials and Methods**

### ***Animal models***

LR11(-/-)<sup>1</sup> and control wild-type (C57Bl/6) mice aged 8 – 10 weeks (n = 8 per group) (Sankyo Labo Corporation Inc. Tokyo, Japan) were exposed to chronic hypoxia (CH; FIO<sub>2</sub> 10%) or room air (Control) for three weeks as described<sup>2</sup> and had access to standard chow and water *ad libitum*.

### **Measurement of right ventricular pressure**

Right ventricular systolic pressure (RVSP) was measured in mice lightly anesthetized with isoflurane using a Univentor 400 anesthesia unit (Univentor Ltd., Zejtun, Malta) The right internal jugular veins of the mice were surgically exposed and cannulated with a 1.4-F microtip pressure transducer (Millar Instruments, Houston TX, USA) before sacrifice. The transducer was advanced into the right ventricle, and right ventricular pressure was continuously monitored for 10 minutes. Heart rates (480 – 550 beats/min were deemed acceptable) and pressure waveforms were monitored to ensure the validity of the pressure measurements. Data were analyzed using PowerLab software (AD Instruments, Denver, CO, USA).

### **Measurement of right ventricular hypertrophy**

The mice were sacrificed with isoflurane after measuring hemodynamic parameters and then the hearts were removed and placed in formalin for 24 hours. The free wall of the right ventricle (RV) was then carefully dissected from the left ventricle (LV) and septum (S) and all parts were individually weighed to calculate the ratio of RV/LV+S weight as



an index of right ventricular hypertrophy.

### **Histological evaluation**

The lungs were fixed via an intra-tracheal infusion of 4% phosphate-buffered formalin at a pressure of 23 cmH<sub>2</sub>O and then the tissues were embedded in paraffin, sectioned at a thickness of 5 µm for light microscopy and visualized by staining with hematoxylin eosin and Elastica van Gieson. Briefly, pulmonary vascular remodeling was assessed by measuring the media thickness of vessels (diameter 50 – 100 µm) indexed to terminal bronchioles and as changes in the ratios (%) of muscular, partly muscular and non-muscular arteries. Pulmonary vessel wall thickness was analyzed in a blinded fashion using KS400 morphometry software (Carl Zeiss, Oberkochen, Germany) as described<sup>3,4</sup>. The ratio of wall thickness is expressed as medial wall thickness (distance between the internal and external elastic lamina) divided by the diameter of the vessel (distance between the external elastic lamina) × 100 (%). At least 10 arteries from five lung sections per mouse were analyzed. Arteries with an external diameter of 20 - 70 µm were considered fully muscularized if a double elastic lamina was distinctly visible throughout the diameter of vessel cross sections. Arteries were considered partially muscularized if a double elastic lamina was distinctly visible for at least half of the vessel diameter. The ratio of vessels with double elastic lamina was calculated as the number of muscularized vessels per total number of vessels counted. The number of inflammatory cells under hypoxia was evaluated in an immunohistochemical comparison using the common antigen for leukocytes, anti-mouse CD45 antibody (BD Pharmingen #550539). Cells positive for CD45 were counted in the distal pulmonary artery adventitia (diameter 50 – 100 µm).

### **Western blot analysis**

Protein concentrations were determined in peripheral lung tissues that were collected and homogenized immediately after the mice were sacrificed. Whole lung homogenates (45 µg protein/lane) were resolved by 7.5% gradient SDS-PAGE gel (Invitrogen) electrophoresis and then proteins were electro-blotted onto polyvinylidene fluoride (PVDF) or nitrocellulose membranes. Non-specific binding was blocked with 5% skim milk and then proteins were probed using primary LR11-specific (1:1000, A2-2-3) or mouse monoclonal anti-HIF1α (1:1000, BD Transduction Laboratories #610958) antibodies on a rocking platform for one hour at room temperature. Washed membranes were incubated with horseradish peroxidase–conjugated secondary antibody. The expression of proteins was normalized to that of β-actin or GAPDH. All proteins on blots were immunodetected using the SuperSignal chemiluminescence method (Pierce Biotechnology, Rockford, IL, USA), and relative immunoreactive levels of proteins were quantified using the ChemiDoc XRS imaging system with Quantity One software (Bio-Rad Laboratories Inc., Hercules, CA, USA).

### **Mouse serum sLR11 levels**

Mouse serum sLR11 levels were measured using a specific ELISA. Recombinant LR11 vps10 domain protein was provided by Dr. J. Takagi<sup>5</sup>. We detected sLR11 in mouse, rat and rabbit sera using a sandwich ELISA and monoclonal antibodies (mAb) 93222 and 93213 that were raised by immunizing LR11<sup>-/-</sup> mice with recombinant LR11 vps10 domain protein. In brief, mouse serum samples were diluted with sample buffer, reacted

with the capture mAb 93222 for 2 h and then incubated with biotinylated mAb 93213 for 1 h. LR11-antibody complexes were quantified by comparison with standard rabbit serum using horseradish peroxidase-conjugated streptavidin. Levels of sLR11 in rabbit serum were determined as described<sup>6</sup>.

### **Harvesting mouse pulmonary artery VSMC and cell proliferation assays**

Mouse pulmonary arterial VSMCs from groups of 10-week-old male mice cultured in DMEM containing 10% FBS at 37°C under a humidified atmosphere of 5% CO<sub>2</sub> and 95% air as described<sup>4</sup> were used at passages 4 to 6. Mouse pulmonary arterial VSMC (70% - 80% confluence) were seeded into 96-well plates (5,000 cells/well) in DMEM containing 10% FBS. The VSMC were starved on the following day and then stimulated with either PDGF-BB (20 ng/mL) or sLR11 (10 ng/mL), or placed under hypoxia (1% O<sub>2</sub> for 48 hours). Thereafter, BrdU was added, the cells were incubated for two hours and then cell proliferation was assessed as the rate of BrdU incorporation determined using enzyme-linked immunosorbent assay (ELISA) kits (Roche, Mannheim, Germany).

### **Cell culture under hypoxia**

Human PASMC from healthy individuals (Promocell GmbH, Heidelberg, Germany) were cultured under hypoxic conditions (1% O<sub>2</sub> and 5% CO<sub>2</sub>) in an Oxygen Controller ProOx110 (Biospherix Ltd., Lacona, NY, USA) and then LR11 and HIF-1 $\alpha$  expression was assessed in PASMC at 24, 48, 72 and 96 hours later by Western blotting.

### **RNA interference**

We investigated how HIF-1 $\alpha$  regulates LR11 expression in PAVSMC using custom-synthesized small interfering RNA (siRNA) targeting HIF1- $\alpha$  (Invitrogen,

Waltham, MA, USA) and a negative control (Invitrogen). Human PASMC were transfected with two specific siRNA and one non-specific control using Lipofectamine RNAiMAX (Invitrogen) as described<sup>7</sup>. The cells were detached and diluted in complete growth medium without antibiotics and seeded. Lipofectamine™ RNAiMAX and RNAi duplex were mixed with Opti-MEM® (Gibco-BRL, Grand Island, NY, USA) and medium reduced serum. After adding complexes of RNAi duplex-Lipofectamine™ RNAiMAX (Life Technologies, Carlsbad, CA, USA), the cells were incubated for 48 hours at 37°C. The sequences of the siRNA against HIF-1 $\alpha$  were as follows:

HIF1- $\alpha$  (1): 5'-AGUUAGUUCAACUGAGUUAAUCCC-3'

HIF1- $\alpha$  (2): 5'-AUAUGAUUGUGUCUCCAGCGGCUGG -3'

### **Selection of patients**

We prospectively enrolled 20 consecutive patients with suspected pulmonary arterial hypertension between May 2010 and April 2014 at Juntendo University Hospital. The criteria for suspected PAH comprised echocardiographic findings and a tricuspid regurgitation (TR) velocity  $\geq 3.0$  m/s, or  $\geq 2.5$  m/s accompanied by symptoms such as dyspnea or general fatigue (Figure 1). Patients were diagnosed with PAH if they had mean pulmonary arterial pressure (mPAP)  $\geq 25$  mmHg and pulmonary capillary wedge pressure (PCWP)  $\leq 15$  mmHg. Serum was separated from blood samples by centrifugation at  $1000 \times g$  for 10 min and stored at  $-80^{\circ}\text{C}$ . Soluble LR11 was measured using a sandwich enzyme-linked immunosorbent assay (ELISA) with specific monoclonal antibodies directed against human LR11<sup>6</sup>. Other markers such as BNP and uric acid were determined using routine laboratory assays.

## **Statistical analysis**

Data are expressed as means  $\pm$  SD or ratios (%) and categorical data are expressed as numbers. All data were analyzed using JMP Statistical Discovery Software 10.0 (SAS Institute, Cary, NC, USA). Comparisons of means between 2 groups were performed by unpaired Student's t-test. Comparisons of means among multiple groups were performed by two-way analysis of variance (ANOVA), followed by Tukey's HSD (honestly significant difference) multiple comparisons. Categorical variables (presented as frequencies) were compared using the chi-square test. Associations between measured parameters were analyzed using Pearson's correlation coefficient. P-value less than 0.05 was considered to be statistically significant.

## **Ethics statement**

All patients provided written informed consent to participate in the study, which was approved by the Human Ethics Review Committee of Juntendo University and conformed to the Declaration of Helsinki. All experimental animal studies proceeded in accordance with the protocols approved by the Juntendo University Animal Care and Use Committee.

1. Bujo H, Saito Y. Modulation of smooth muscle cell migration by members of the low-density lipoprotein receptor family. *Arterioscler Thromb Vasc Biol.* 2006;26:1246-1252.
2. Frank DB, Abtahi A, Yamaguchi DJ, Manning S, Shyr Y, Pozzi A, Baldwin HS,

- Johnson JE, de Caestecker MP. Bone morphogenetic protein 4 promotes pulmonary vascular remodeling in hypoxic pulmonary hypertension. *Circ Res.* 2005;97:496-504.
3. Mizuno S, Bogaard HJ, Kraskauskas D, Alhussaini A, Gomez-Arroyo J, Voelkel NF, Ishizaki T. P53 gene deficiency promotes hypoxia-induced pulmonary hypertension and vascular remodeling in mice. *Am J Physiol Lung Cell Mol Physiol.* 2011;300:L753-761.
  4. Satoh K, Satoh T, Kikuchi N, et al. Basigin mediates pulmonary hypertension by promoting inflammation and vascular smooth muscle cell proliferation. *Circ Res.* 2014;115:738-750.
  5. Nakata Z, Nagae M, Yasui N, Bujo H, Nogi T, Takagi J. Crystallization and preliminary crystallographic analysis of human LR11 Vps10p domain. *Acta Crystallogr Sect F Struct Biol Cryst Commun.* 2011;67:129-132.
  6. Fujimura K, Ebinuma H, Fukamachi I, Ohwada C, Kawaguchi T, Shimizu N, Takeuchi M, Sakaida E, Jiang M, Nakaseko C, Bujo H. Circulating LR11 is a novel soluble-receptor marker for early-stage clinical conditions in patients with non-hodgkin's lymphoma. *Clin Chim Acta.* 2014;430:48-54.
  7. Murakami A, Takahashi F, Nurwidya et al. Hypoxia increases gefitinib-resistant lung cancer stem cells through the activation of insulin-like growth factor 1 receptor. *PloS one.* 2014;9:e86459.

Figure 1

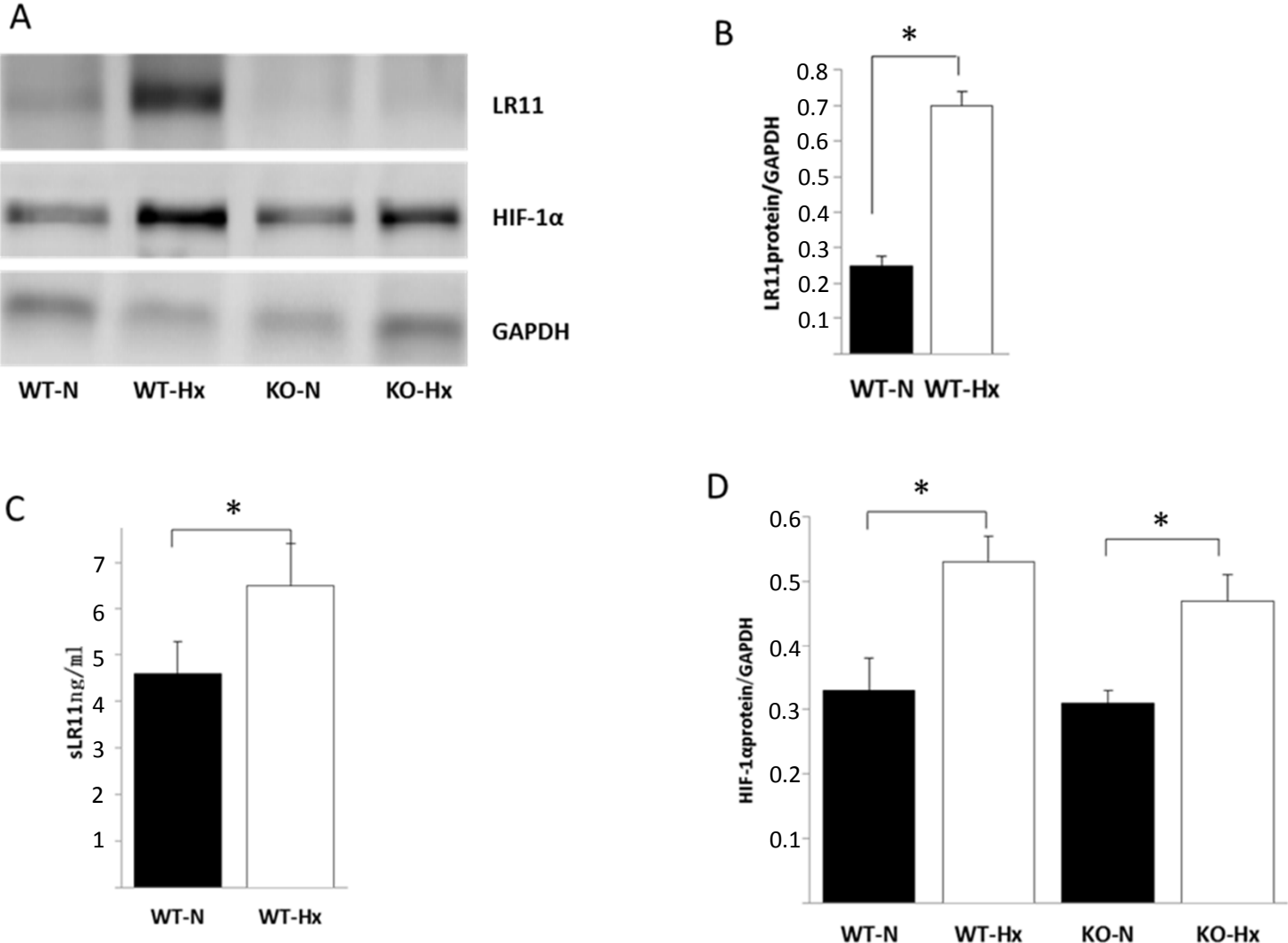


Figure 2

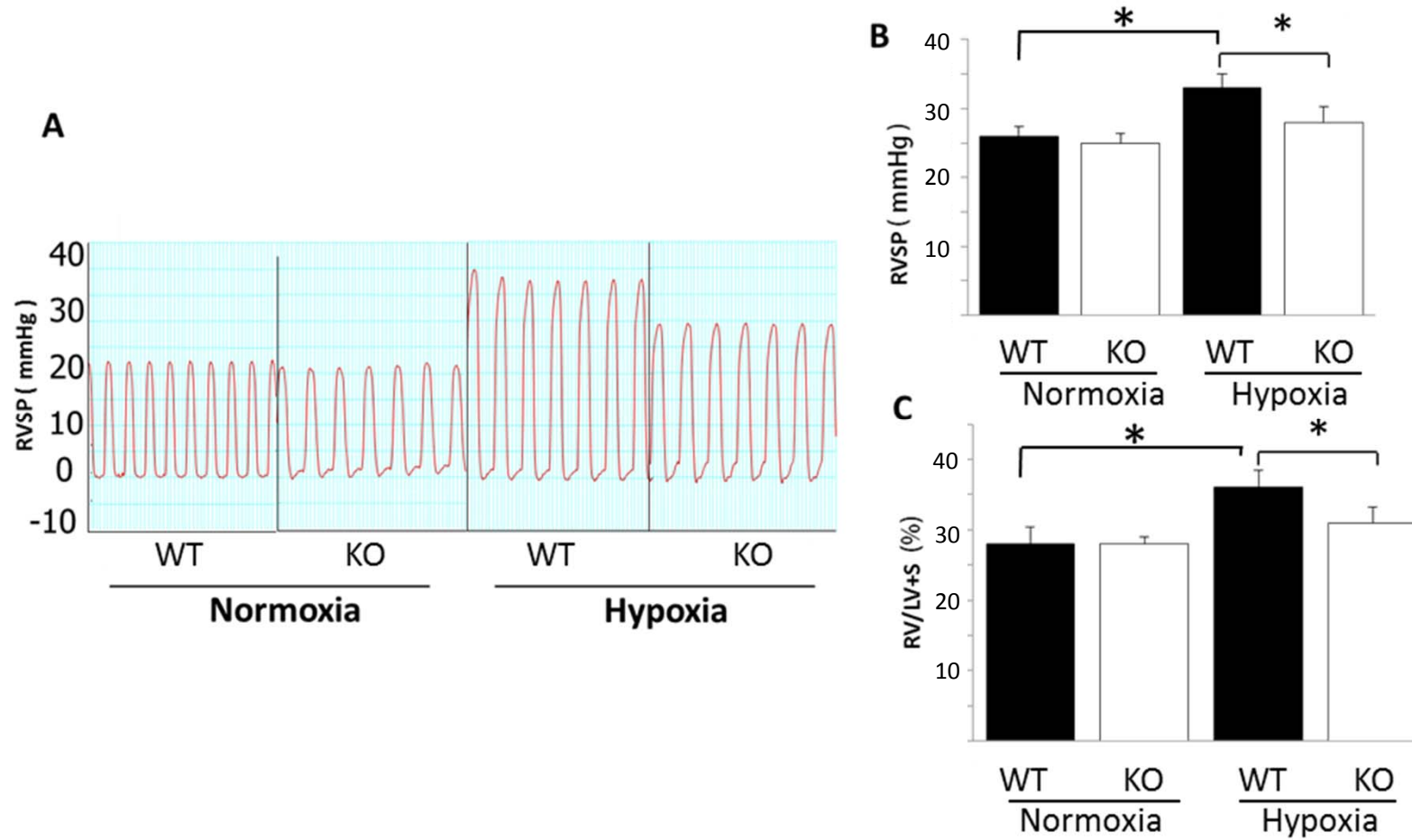




Figure 3

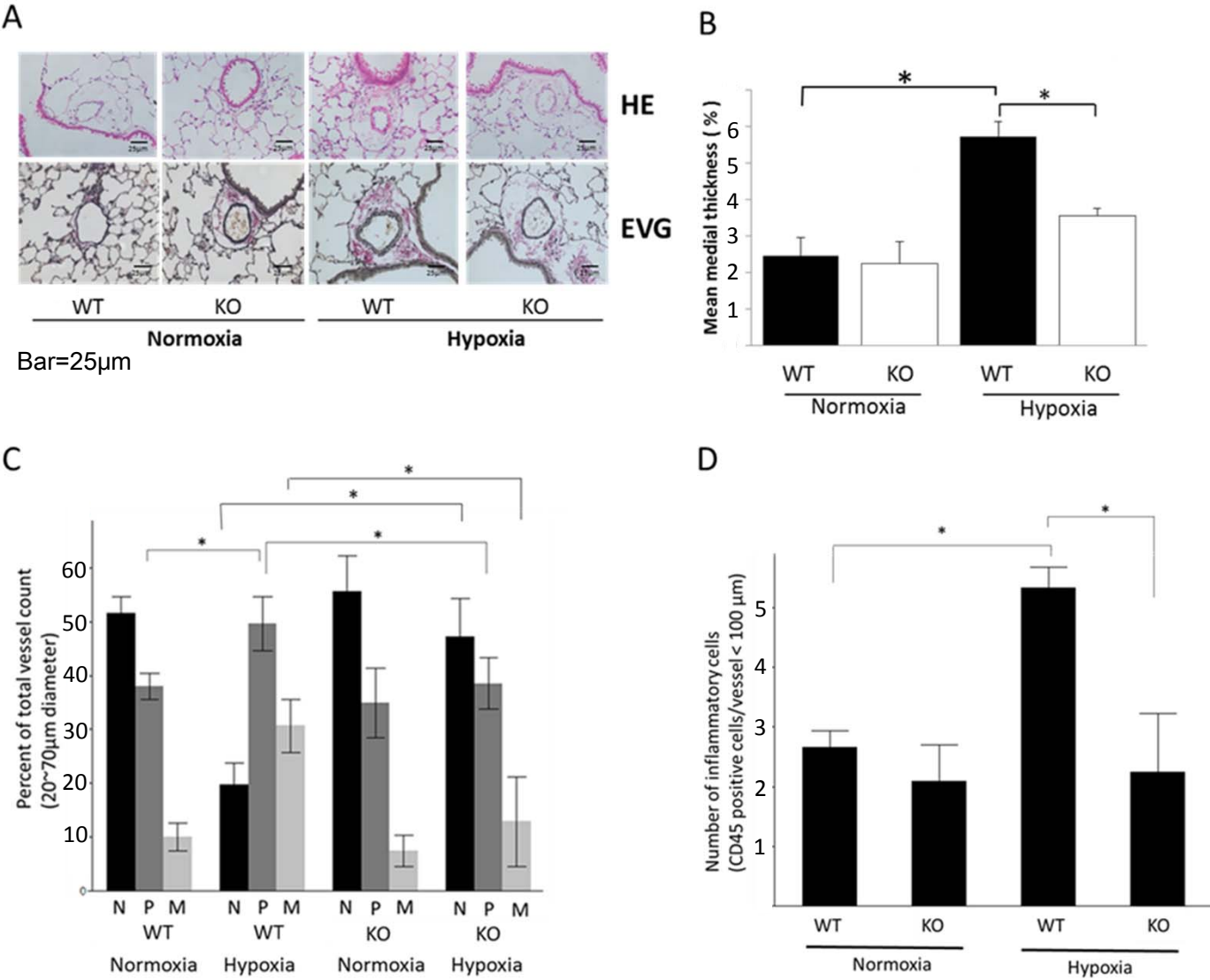


Figure 4

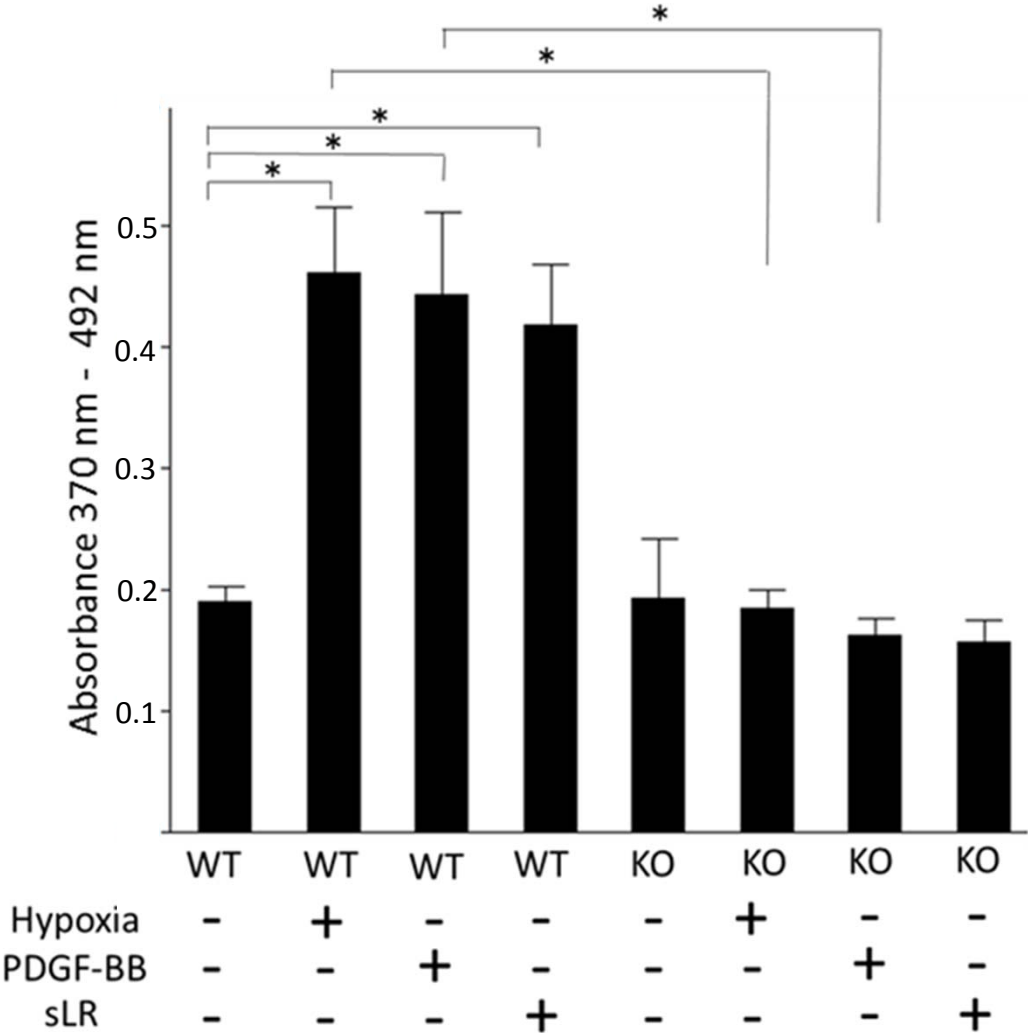


Figure 5

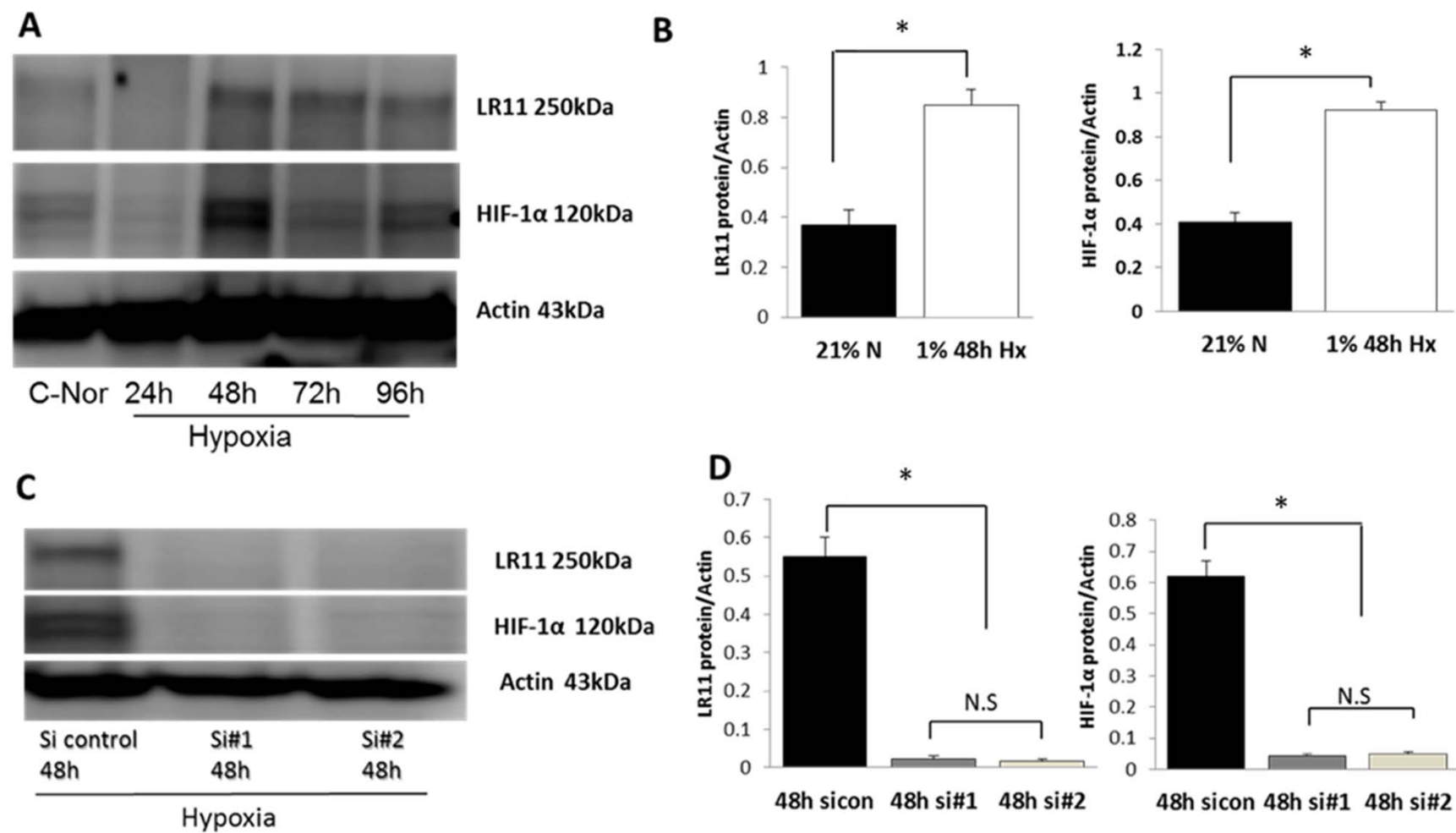


Figure 6

